

Commercial in El Rosario

Reference: R3888871



Bedrooms: by request

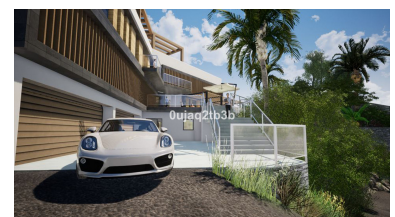
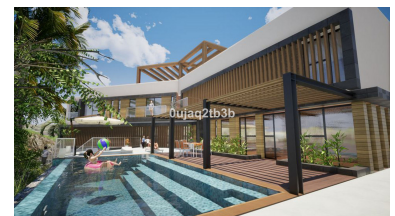
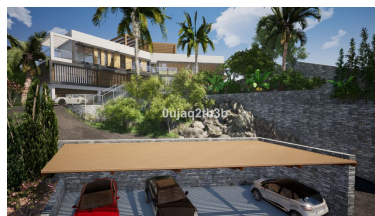
Bathrooms: by request

M²: 1,704

Price: 555,000 €

Status: Sale

Property Type: Commercial Parking places: by request



Overview: Magnificent plot in a great location and walking distance to Sports center, commercial center, services and amenities. There is a project to build a very large house taking advantage of the slope in the plot. South-West oriented. El Rosario is a consolidated residential area with high demand for plots and properties.

Features:

Mountain views, Private garden, Golf, Investment, Resale