

Commercial in Benahavís

Reference: R4753684

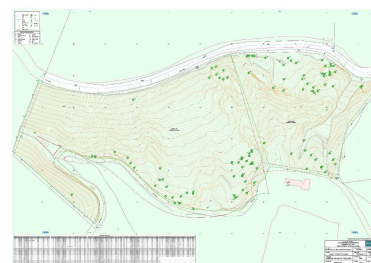


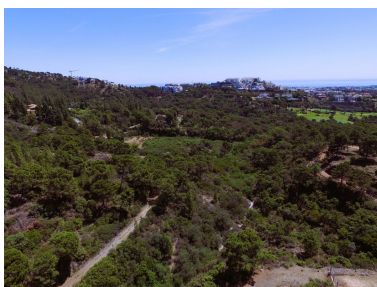
Bedrooms: by request
Status: Sale

Bathrooms: by request
Property Type: Commercial

M²: 34,506
Parking places: by request

Price: 2,950,000 €





Overview: Undoubtedly one of the largest and most scenic residential plots available on the Costa del Sol - an extraordinary private estate of 34,506 m², classified as rustic land, but with permission to build 1% above-ground habitable space, meaning that you could build the villa of your dreams in a 5* location, with all the privacy and outdoor space you could ever want. This is an exceptional opportunity. Please contact us for viewings and further information.

Features:

Sea views, Mountain views, 24H Security, Investment