

Terraced Townhouse in Nueva Andalucía

Reference: R4953976



Bedrooms: 3

Bathrooms: 2

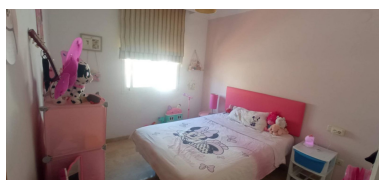
M²: 160

Price: 565,000 €

Status: Sale

Property Type: Terraced
Townhouse

Parking places: by request



Overview: Bright & Spacious Frontline Aloha Golf Townhouse – Prime Location! This sunny, south-facing 3-bedroom townhouse enjoys an unbeatable frontline position overlooking Aloha Golf and is just a short stroll from supermarkets, cafés, international schools, public transport, and the world-famous Puerto Banús. Plus, it's right on the doorstep of the prestigious Royal Aloha Golf Club—a golfer's dream! Inside, the home features a bright lounge, with a separate kitchen that can easily be opened up to create a modern, open-plan living space. From here, step out to your private terraced offering maximum privacy—perfect for relaxing. The spacious main bedroom comes complete with an en-suite bathroom, built-in wardrobes, and a private sun-drenched terrace, with stunning golf views. One of the home's standout features is the expansive basement, offering endless possibilities. Whether you envision a games room, home cinema, guest apartment, or additional storage space, this area is yours to customize. With private parking and access to a communal garage, convenience is key. With a recent price reduction for a quick sale, this property is an incredible investment opportunity with strong rental potential. A must-see for golf lovers and smart investors alike! Schedule a viewing today.

Features:

Golf, None, Pool, Air conditioning, Mountain views, Golf, None, Private garden, Parking, Investment