

Terraced Townhouse in Bel Air

Reference: R5045038



Bedrooms: 3

Bathrooms: 3

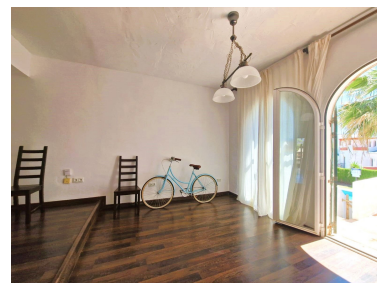
M²: 190

Price: 419,000 €

Status: Sale

Property Type: Terraced
Townhouse

Parking places: by request





Overview: Tranquility, space, and a prime location — your new home in Bel-Air awaits This bright, semi-detached three-story house, located in the peaceful residential area of Bel-Air, offers the perfect blend of natural surroundings, comfort, and lifestyle. Unbeatable location Everything within reach: supermarkets, gyms, a pharmacy, and all essential services just steps away. Excellent connections: only 2 minutes to Cancelada, with San Pedro, Puerto Banús, and Estepona all nearby. Walk to the beach: unwind at Playa del Saladillo, just a 10-minute walk away. A peaceful retreat Surrounded by greenery and gardens, this home offers a quiet and serene setting — ideal for those who value calm and rest. Space to live and enjoy 3 spacious bedrooms across two floors, plus a versatile studio — ideal for families or remote work. 3 full bathrooms (2 en suite) + guest toilet: comfort and privacy for everyone. Bright living-dining room: cozy and perfect for entertaining. Large separate kitchen: functional and perfect for cooking lovers. Private front garden (40 m²) with outdoor shower and built-in BBQ — ideal after a beach day. Covered dining terrace: great for outdoor meals with friends and family. Fitted wardrobes in every bedroom for ample storage. Charming community 2 communal pools surrounded by well-maintained gardens. Private underground garage: convenience and safety for your vehicle. Natural light and spaciousness throughout Thanks to its excellent orientation, the house enjoys abundant natural light all day long, creating a warm and inviting atmosphere. Make it your own The property is delivered unfurnished, giving you the freedom to decorate it to your taste and turn it into your dream home.

Features:

Golf, Pool, Air conditioning, Lift, None, Private garden, Parking, Golf, Holiday Home, Investment, Resale