

Penthouse in Benahavís

Reference: R5045764

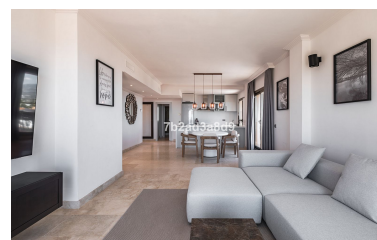
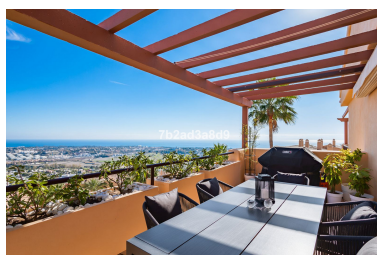


Bedrooms: 3  
Status: Sale

Bathrooms: 2  
Property Type: Penthouse

M<sup>2</sup>: 119  
Parking places: by request

Price: 795,000 €



Overview: Spectacular one level penthouse with €42.000/year fixed rental income (approx 6% ROI), enjoying panoramic sea and mountain views in La Alquería, Benahavís. All in one level, property comprises: entrance hall; living/dining room with access to two terraces: one southeast-facing with views to La Concha mountain, Atalaya golf course, and the sea, and one south/southwest-facing with panoramic sea, Gibraltar, and North of Africa views; open plan fully equipped kitchen with top quality Siemens appliances; en-suite master bedroom with access to the terrace; and 2 bedrooms sharing a bathroom. Extra features include: 24h security and concierge service; CCTV cameras throughout; A/C hot and cold with Airzone controllers; underfloor heating throughout; gas BBQ. Located in a peaceful location just 15 minutes drive to Puerto Banús and the beach.

---

#### Features:

Golf, Pool, Air conditioning, Heating, Sea views, Mountain views, Golf, Private garden, Lift, None, 24H Security, Parking, Holiday Home