

+34 654 198 994

**PLANETA PROPERTY**  
Marbella - Spain

info@planetaproperty.com

---

Penthouse in Benahavís

Reference: R5250145

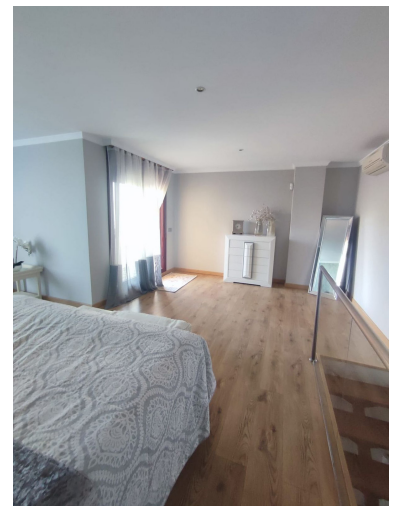


Bedrooms: 2  
Status: Sale

Bathrooms: 2  
Property Type: Penthouse

M<sup>2</sup>: 162  
Parking places: by request

Price: 290,000 €



---

Overview: Penthouse Duplex, Benahavís, Costa del Sol. 2 Bedrooms, 2 Bathrooms, Built 105 m<sup>2</sup>, Terrace 40 m<sup>2</sup>.  
Setting : Country, Close To Town, Close To Forest, Urbanisation. Orientation : South East. Condition : Excellent. Pool : Communal. Climate Control : Air Conditioning, Pre Installed A/C, Hot A/C, Fireplace. Views : Mountain, Panoramic, Garden, Pool. Features : Lift, Fitted Wardrobes, Private Terrace, Gym, Sauna, Tennis Court, Storage Room, Marble Flooring, Jacuzzi, Restaurant On Site. Furniture : Part Furnished. Kitchen : Fully Fitted. Garden : Communal. Security : Gated Complex, 24 Hour Security. Parking : Underground, Garage. Unique Opportunity! Duplex Penthouse in Parque Botánico Resort & Country Club We are pleased to present an exclusive duplex penthouse in Parque Botánico Resort & Country Club, a luxurious residential complex located in the municipality of Benahavís, set in a stunning mountainous environment, yet just minutes from the coast, golf courses, and all the amenities of the Costa del Sol. This complex stands out for its unique architecture, abundant green areas, landscaped gardens with lagoons and waterfalls, and a full range of resort-style services and amenities, making it an ideal choice for permanent residence, vacation home, or investment. Complex Infrastructure and Amenities: • Several outdoor pools with sun loungers and pool bar • Spacious, meticulously maintained tropical gardens • Indoor pool, spa with jacuzzi, sauna, and hydrotherapy areas • Modern gym and dedicated yoga area • Tennis and padel courts, mini-soccer field • Coworking space for residents • 24-hour security and CCTV surveillance • Underground parking and storage rooms • Children's playgrounds and recreational areas • Option to rent out apartments through the professional management of the complex The complex is surrounded by nature, ensuring peace and privacy, yet only 10 minutes by car from beaches, restaurants, shops, and the best golf clubs in the area: El Paraíso, Villa Padierna, Atalaya, and Guadalmina. Type: Duplex Penthouse

---

Features:

Pool, Air conditioning, Heating, Mountain views, Private garden, Lift, None, 24H Security, Parking