

+34 654 198 994

PLANETA PROPERTY
Marbella - Spain

info@planetaproperty.com

Penthouse in Benahavís

Reference: R5302945

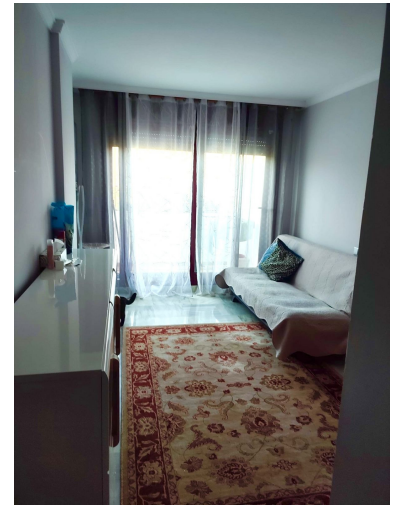
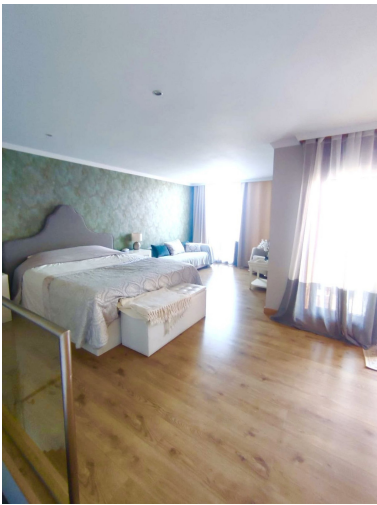
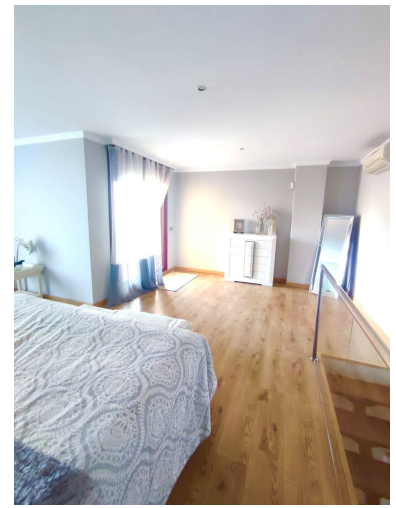


Bedrooms: 2
Status: Sale

Bathrooms: 1
Property Type: Penthouse

M²: 125
Parking places: by request

Price: 290,000 €



Overview: Penthouse Duplex, Benahavís, Costa del Sol. 2 Bedrooms, 1 Bathroom, Built 125 m², Terrace 40 m².
Setting : Close To Golf, Close To Town, Close To Schools, Urbanisation. Orientation : North East. Condition :
Excellent. Pool : Communal, Indoor, Heated, Children`s Pool. Climate Control : Air Conditioning, Hot A/C, Cold A/C.
Views : Mountain, Panoramic, Garden, Pool, Forest. Features : Covered Terrace, Lift, Fitted Wardrobes, Private
Terrace, Solarium, Satellite TV, WiFi, Gym, Sauna, Games Room, Paddle Tennis, Tennis Court, Utility Room,
Ensuite Bathroom, Access for people with reduced mobility, Barbeque, Double Glazing, Restaurant On Site, Fiber
Optic. Furniture : Fully Furnished. Kitchen : Fully Fitted. Garden : Communal, Landscaped. Security : Gated
Complex, 24 Hour Security. Parking : Underground, Garage, Covered, Open, Street, More Than One, Communal,
Private. Utilities : Electricity. Category : Golf.

Features:

Golf, Pool, Air conditioning, Heating, Mountain views, Private garden, Lift, None, 24H Security, Parking, Golf