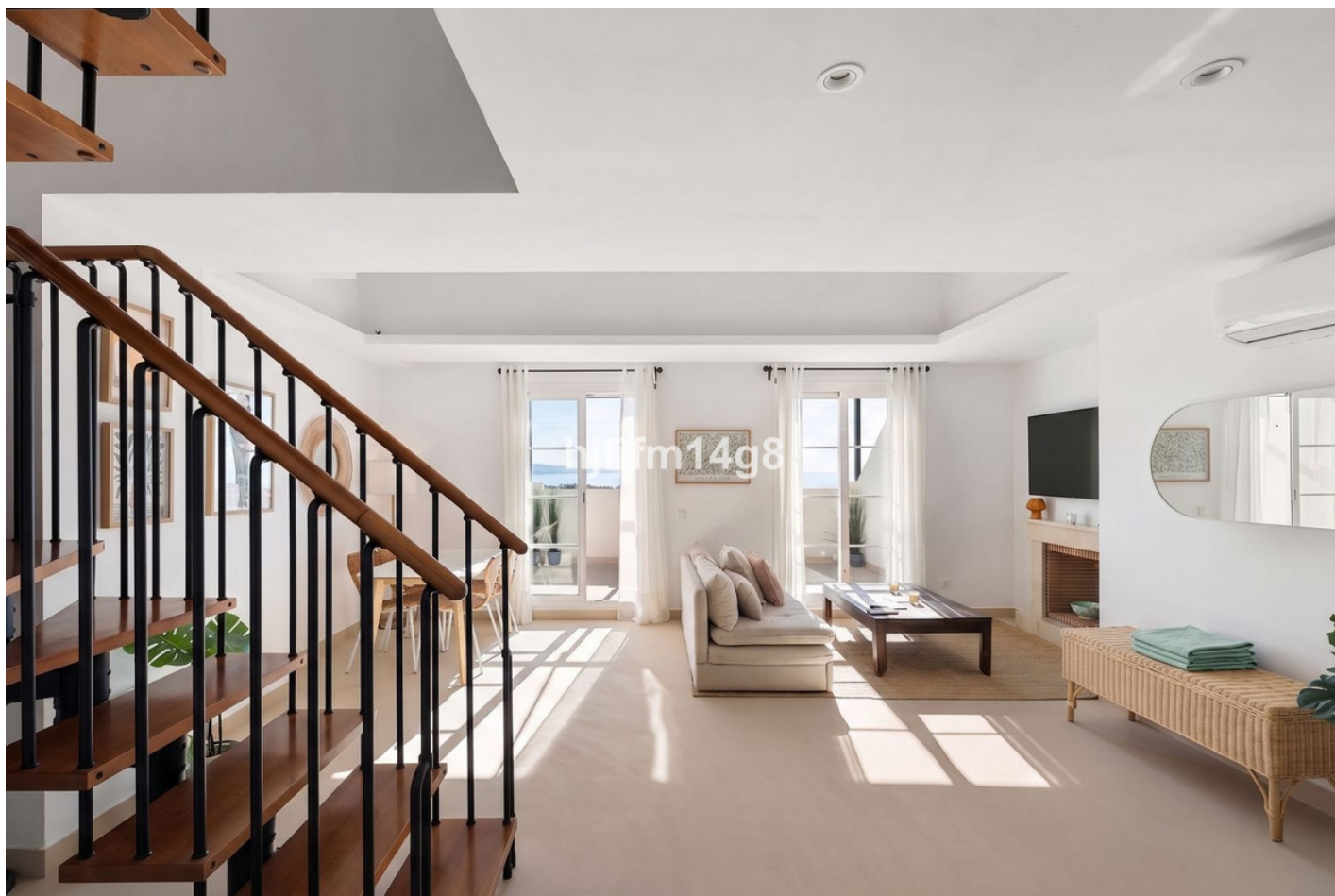


Penthouse in Nueva Andalucía

Reference: R5360785

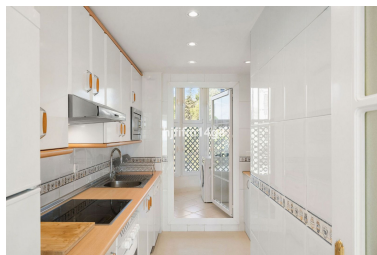
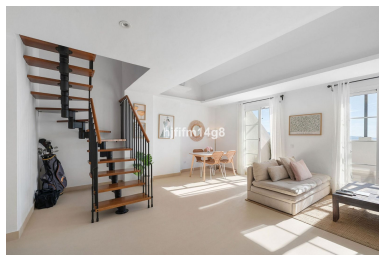
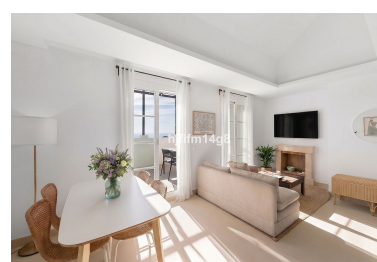
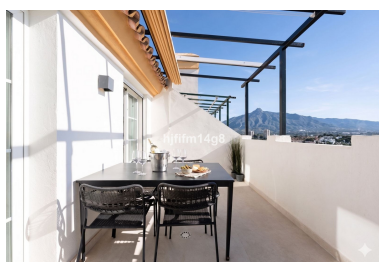


Bedrooms: 2  
Status: Sale

Bathrooms: 2  
Property Type: Penthouse

M<sup>2</sup>: 96  
Parking places: by request

Price: 595,000 €



Overview: Discover this bright and beautifully presented duplex penthouse in the sought-after Señorío de Aloha, located in the heart of Nueva Andalucía. Positioned on the top floor of a secure, well-maintained community, this property offers an exceptional blend of comfort, privacy, and breathtaking views across the Mediterranean and La Concha mountain. The apartment features two spacious bedrooms and two modern bathrooms, complemented by a stylish living area designed for both relaxation and entertaining. Recently refurbished, the home presents a fresh, contemporary feel while retaining a warm and inviting atmosphere. The standout feature is the generous east-facing terrace, offering spectacular panoramic views and abundant morning sunshine. It's an ideal setting for al fresco breakfasts or evening drinks, making the most of Marbella's outdoor lifestyle. The kitchen maintains its charming Andalusian character while providing full functionality—perfect for everything from casual breakfasts to relaxed dinners with family and friends. Residents of Señorío de Aloha enjoy access to three beautifully landscaped swimming pool areas surrounded by tropical gardens, as well as a padel court for an active lifestyle. The property also includes private parking. Ideally located in Nueva Andalucía, the penthouse is within walking distance of Centro Plaza and a large supermarket, and just minutes from golf courses, sandy beaches, and the vibrant marina of Puerto Banús. This is a rare opportunity to acquire a stylish penthouse in Señorío de Aloha, Nueva Andalucía—perfect as a permanent residence, holiday home, or investment property in one of Marbella's most desirable locations.

---

Features:

Golf, None, Pool, Air conditioning, Sea views, Mountain views, Private garden, Lift, None, Parking