

**Commercial in Puerto Banús**

**Reference: R5364055**



**Bedrooms: 3**

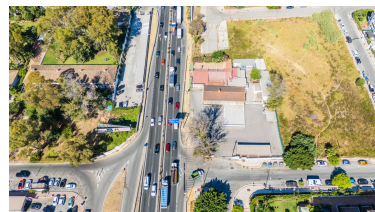
**Bathrooms: 3**

**M<sup>2</sup>: 908**

**Price: 4,300,000 €**

**Status: Sale**

**Property Type: Commercial** Parking places: by request



Overview: Prime commercial plot with existing restaurant structure positioned on the A-7 at Km 173, Marbella, at the gateway to Puerto Banús. The property comprises a multi-room building with three interior dining halls and terrace areas, historically operating as an established hospitality venue since 1988. It benefits from consolidated commercial use, direct road access, and exceptional visibility within a high-demand residential and tourism corridor. Notably, the asset includes a 24-hour operational license—an increasingly rare advantage in Marbella—providing significant flexibility for extended trading and high-revenue concepts. The combination of location, licensing, and existing infrastructure positions the property as a compelling redevelopment or repositioning opportunity for hospitality, retail, or mixed-use investment.

---

Features:

None, Heating, None, Parking, Investment