

+34 654 198 994

PLANETA PROPERTY
Marbella - Spain

info@planetaproperty.com

Дом в Atalaya

Референция: R4868437

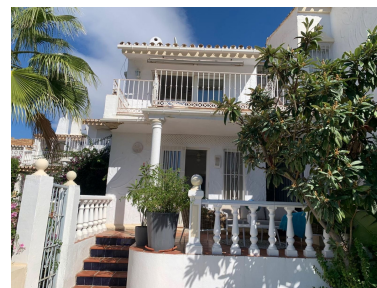


Спальни: 2
Статус: Продажа

Ванные: 2
Тип недвижимости: Дом

М²: 96
Места: по запросу

Цена: 339 000 €



Описание: This unique Boutique style pueblo is situated within the ever-popular location of Atalaya, right beside the golf course, the area offers such peace and tranquillity – the urbanisation consists of only nine houses, which is set within a gated complex, that offers security and peace of mind. This spacious home is semi-detached which boasts a westerly aspect, which has the most amazing views to the Mediterranean and out towards Gibraltar, being west facing, afternoon sunshine is guaranteed. The accommodation is very spacious and features 2 bedrooms & 2 bathrooms – the property is over two floors and on entry level a small staircase leads to the upper level into an open plan Lounge kitchen dining area – the kitchen is spacious and is furnished with modern appliances with wall and base modern units with contrasting worktop surfaces. Adjacent to the lounge there is a useful WC cloakroom also on this level. The lounge has a large open working fireplace, for those very few cooler evenings in the winter – glass fronted patio doors open up into a fabulous sized terrace where you can sight the most amazing sunsets, and views towards the mountains, there is adequate room for a chill sofa set and a BBQ area. Both bedrooms are located downstairs and share a modern bathroom with a walk-in shower. Within the internal hallway there are ample storage/wardrobe units. From the master bedroom double glass fronted patio doors lead onto a lower terrace which also leads onto a pretty garden, offering great outdoor space & privacy. There is a useful storage room just off this terrace. This home enjoys the benefit of individually controlled Air conditioning units which are hot & cold throughout. There is a lovely communal pool with sun deck area, surrounding the houses there are immaculately attended garden grounds, which include fruit trees, exotic plants and stunning shrub plants. Each house has its own allocated parking space which is included in the price. The Atalaya Golf clubhouse is literally just around the corner and Diana Park commercial centre is a 5 minute drive, where there are restaurants, bars and supermarkets.

Особенности:

Гольф, Бассейн, Кондиционирование, Обогрев, Вид на горы, None, Частный сад, Парковочные места, Гольф, Дом отдыха