

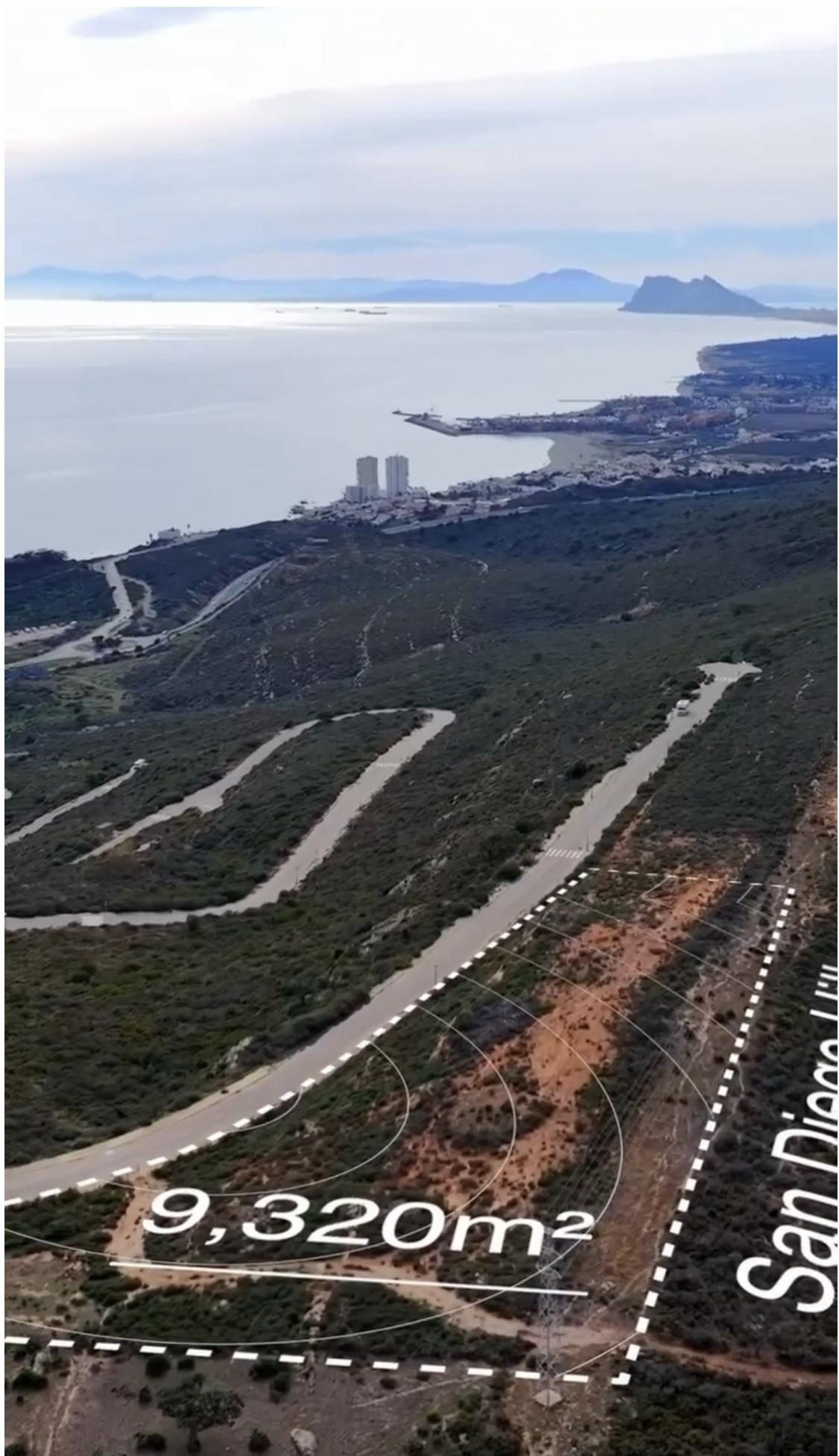
+34 654 198 994

PLANETA PROPERTY
Marbella - Spain

info@planetaproperty.com

Коммерческое в Sotogrande

Референция: R5051869



Спальни: по запросу

Ванные: по запросу

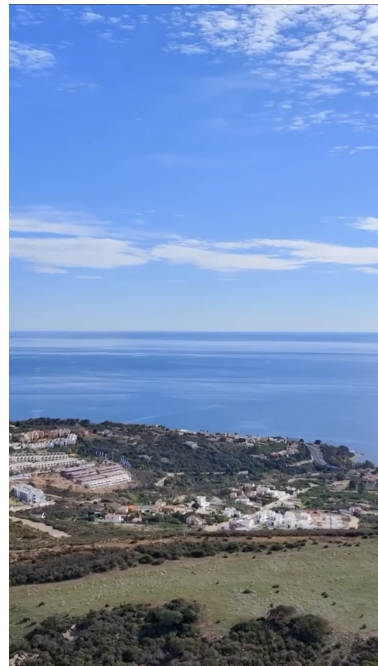
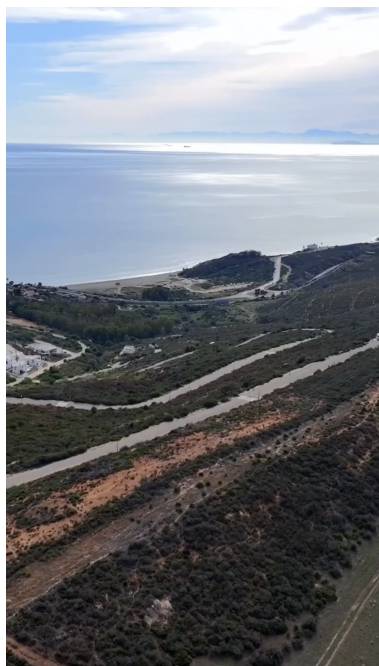
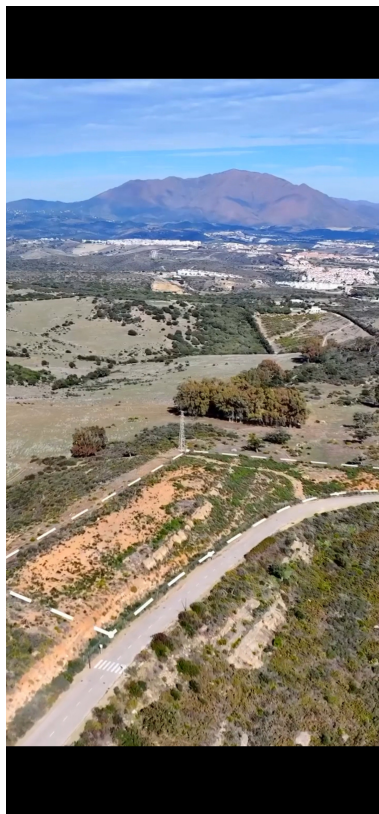
М²: 2 744

Цена: 3 600 000 €

Статус: Продажа

Тип недвижимости:
Коммерческое

Места: по запросу



Описание: This vast 9,146 m² plot offers an exceptional opportunity for developers to create a unique residential project. With a generous buildable area of 2,743.80 m², this land provides ample space to bring your vision to life. Whether you're planning multiple modern residences or a large luxury development, the potential is limitless. The urban planning parameters allow for a maximum building height of 2 floors, up to 9.5 meters, which offers the chance to design homes with elevated, panoramic views. The plot also benefits from thoughtful setbacks of 5 meters from public boundaries and 3 meters from private boundaries, ensuring both privacy and spacious layouts for each property. Parking considerations have been integrated into the development potential, with one parking space allocated per residence, making it convenient for future homeowners. This prime plot allows for the perfect balance of residential space and amenities, with plenty of room for gardens, outdoor areas, and communal spaces. This land presents a rare opportunity to develop a truly special residential community, offering a blend of modern living, privacy, and space for amenities, all within a highly desirable setting.

Особенности:

Вид на море, Вид на горы, Гольф